

OrCAD Capture 線上零件參考設計圖免費下載

OrCAD® Capture Reference Design 的功能，可以讓工程師在設計線路圖時，如果需要相關零件的參考線路，現在可以直接從 Cadence® 合作夥伴 Arrow 所提供的參考設計圖庫中，搜尋取得相關資訊，其內容包含相關設計電路與設計電路中使用到的功能性元件說明。

STEVAL-1KR002V4D
Reference Design by STMicroelectronics

STEVAL-1KR002V4D, SPIRIT1 868-MHz Low Data Rate Transceiver Daughter Board. The STEVAL-1KR002V4D product evaluation board is based on the SPIRIT1 a very low-power RF transceiver extended for RF wireless applications in the sub-1 GHz frequency band.

Interactive Reference Designs

Filters [Clear]

Application

- AC Motor Control (4)
- AC to DC Multi-Output Power Supplies (14)
- AC to DC Single Output Power Supplies (121)
- Accelerometer (29)
- Active Bandpass Filter (10)

End Product

- Active Antenna (47)
- ATE IC Tester (45)
- Audio (124)
- Automatic Test Equipment

Featured Parts

Part	Manufacturer	Product Type	Details
89S1640-R88#P	STMicroelectronics	EEPROM	Details
NK32250A12-2000 5-TDORQ2	NDK	Crystals	Details
NK32250A16-8000 5-TDORQ2	NDK	Crystals	Details
SPIRIT12TR	STMicroelectronics	RF Transceiver	Details
NK32250A-18-2000-8-STD-CRQ-2	NDK	Crystals	Details

Relates to End Products

- Wireless: Wireless Sensor
- Security System: System Monitoring and Control
- Building Automation: Automatic Metering
- Fire Alarm: Home Automation

End Products

End Products	Description
Radio Receiver	CY8CKIT-044, PSoC 4 M customers to evaluate an 4200M device family
Industrial, Automotive Applications	CY8CKIT-026, CAN and I demonstrate the CAN and LIN Bus Communications
Ultrasound Imaging	STEVAL-IME013V1, Evaluation Board based on the STHV800 Cost effective ultrasound pulser IC
Wireless Sensor, System Monitoring and Control, Building Automation, Automatic Metering, Fire Alarm	STEVAL-ID5001V4M, Evaluation Board based on the SPIRIT1 SPSGRF-868 868-MHz RF USB Dongle Module

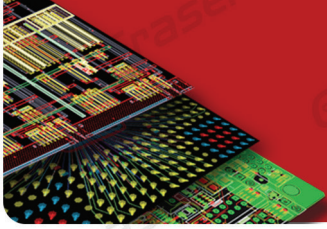
• **Date** : 2017 / 03 / 16

• **Author** : 林曉德

• **Revision** :

• **Version** : Cadence OrCAD V17.2-2016 及以後版本

• **備註**:

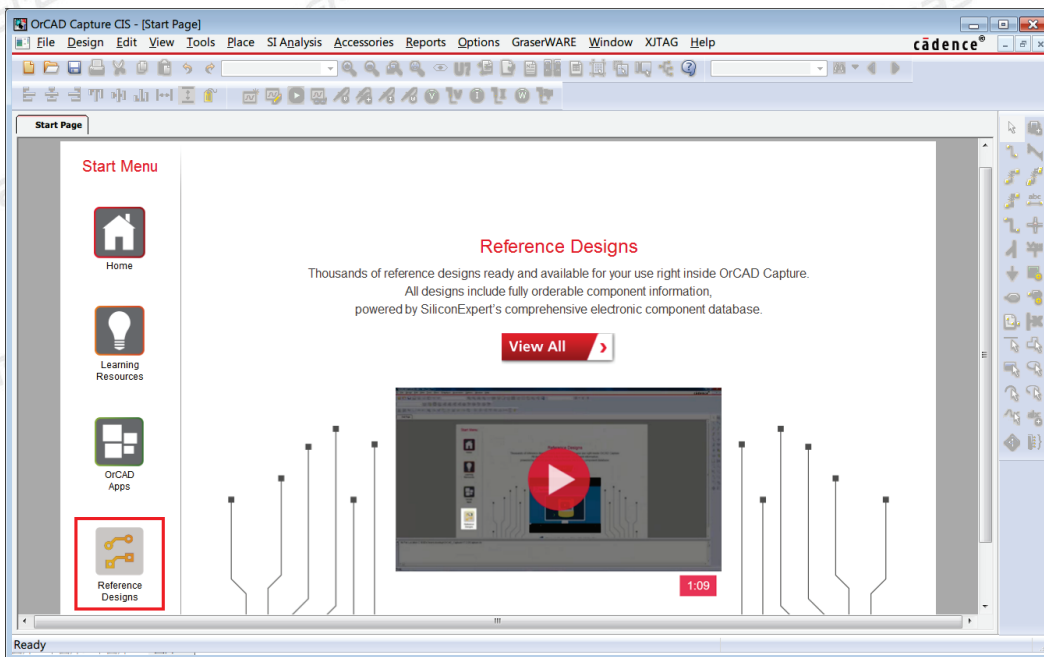


OrCAD Capture 零件參考設計電路圖

OrCAD® Capture Reference Design 的功能，可以讓工程師在設計線路圖時，如果需要相關應用的參考線路，可以直接從 Cadence® 合作夥伴 Arrow 所提供的參考設計圖庫中，取得相關資訊，其內容包含相關設計電路與設計電路中使用到的功能性元件說明。

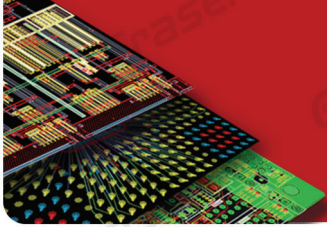
OrCAD Reference Design 說明：

當 OrCAD Capture 開啟時，於 Start Page 畫面中，Reference Design 可連結 SiliconExpert 的電子元件參考設計圖庫。



使用畫面中 View All 的功能，可進入 Arrow 參考設計圖庫中查看相關零件的資訊與參考設計圖。此參考設計圖庫，為結合了 SiliconExpert 工程師與客戶與 IC 零件製造商合作開發或策畫的參考設計圖庫。

Interactive Reference Designs		Curated By: SILICONEXPERT TECHNOLOGIES				
Filters <input type="text" value="Clear"/>		End Products	Description	Released by	Details	Open
<input type="checkbox"/> AC Motor Control (4)		Radio Receiver	CY8CKIT-044, PSoc 4 M-Series Pioneer Kit enables customers to evaluate and develop projects using the PSoc 4200M device family	Cypress Semiconductor	<input type="button" value="View"/>	<input type="button" value="Open"/>
<input type="checkbox"/> AC to DC Multi-Output Power Supplies (14)		Industrial, Automotive Applications	CY8CKIT-026, CAN and LIN Shield Kit is intended to demonstrate the CAN and LIN Bus Communications	Cypress Semiconductor	<input type="button" value="View"/>	<input type="button" value="Open"/>
<input type="checkbox"/> AC to DC Single Output Power Supplies (121)		Ultrasound Imaging	STEVAL-IME013V1, Evaluation Board based on the STHV800 Cost effective ultrasound pulser IC	STMicroelectronics	<input type="button" value="View"/>	<input type="button" value="Open"/>
<input type="checkbox"/> Accelerometer (29)		Communications and Telecom, USB Wireless, System Monitoring and Control	UMFT221XA-01, USB to 4-bit SPI/FT1248 Development Module for the FT221XQ Full Speed USB 2.0 Interface	FTDI Chip	<input type="button" value="View"/>	<input type="button" value="Open"/>
<input type="checkbox"/> Active Bandpass Filter (10)		Wireless, Wireless Sensor, Security	STEVAL-4KR002V4D, SPIRIT1 868-MHz Low Data Rate Transceiver Daughter Board	STMicroelectronics	<input type="button" value="View"/>	<input type="button" value="Open"/>
End Product						
<input type="checkbox"/> Active Antenna (47)						
<input type="checkbox"/> ATE/IC Tester (45)						
<input type="checkbox"/> Audio (124)						
<input type="checkbox"/> Automatic Test Equipment (239)						
<input type="checkbox"/> Automotive and						



使用在畫面中的 **Application** 選項，可以過濾相關設計的應用。

Interactive Reference Designs

Curated By: SILICONEXPERT TECHNOLOGIES

Filters

Application

- AC Motor Control (4)
- AC to DC Multi-Output Power Supplies (14)
- AC to DC Single Output Power Supplies (121)
- Accelerometer (29)
- Active Bandpass Filter (10)

End Product

- Active Antenna (47)
- ATE IC Tester (45)
- Audio (124)
- Automatic Test Equipment

End Products	Description	Released by	Details	Open
Motion Motor Control	STM8/128-MCKIT, Motor Control Starter Kit designed to provide a complete Motor Control Applications with STM8 MCU	STMicroelectronics	<input type="button" value="View"/>	<input type="button" value="Open"/>
Industrial, Air Extractor, Air Circulating Fan, Air Conditioning, Pumps	YROTATE-IT-RX220, Low Cost Motor Control Evaluation Kit based on RX220 Network Server	Renesas Electronics	<input type="button" value="View"/>	<input type="button" value="Open"/>
Air Conditioning, Motor Control	RD-572, Reference Design Supports design of 600V Motion SPM 3 ver.6 series for Air Conditioning and Motor Control applications	Fairchild Semiconductor	<input type="button" value="View"/>	<input type="button" value="Open"/>
Motion Motor Control	690V Motor Control System Reference Design for Industrial Drives Applications	Broadcom Limited	<input type="button" value="View"/>	<input type="button" value="Open"/>

1

選擇 **Details** 中的 **View** 選項，可查看關於此設計的詳細資訊。

Featured Parts：將列出關於此設計圖中所使用到的主動零件(IC 類)。

Learn More：使用瀏覽器連結到 **Arrow** 網站查看關於專案訊息。

Open in OrCAD Capture：將此專案下載到本機電腦中。

Curated By: SILICONEXPERT TECHNOLOGIES

TCR2EN_Typical Application

Reference Design by Toshiba

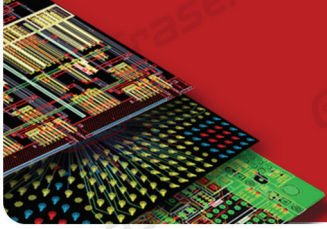
Typical Application for TCR2EN30, 200mA, 3V Output Voltage CMOS Low Drop-Out Regulator in ultra small package

Featured Parts

Part	Manufacturer	Product Type		Details
TCR2EN30.LF	Toshiba	Linear Regulators		Details
TCR2EN30	Toshiba	Linear Regulators		Details
TCR2EN30.LF(S)	Toshiba	Linear Regulators		Details

Relates to End Products

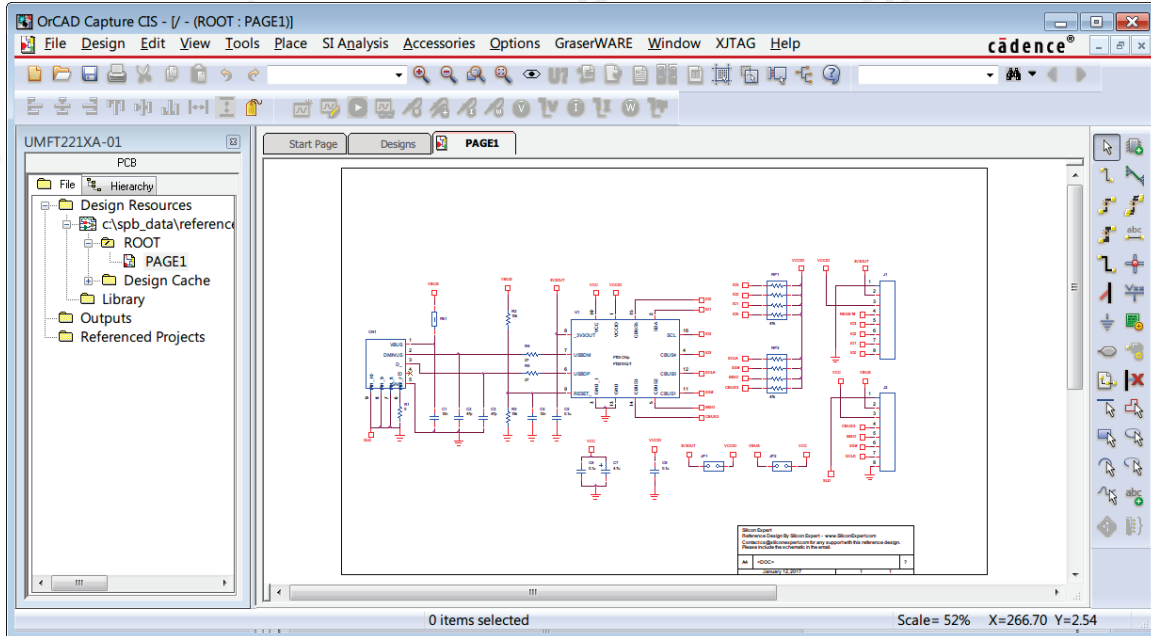
- Power Supplies



使用 Open in OrCAD Capture 即可將 Reference Design 下載到本機程式預設路徑。

Note : Reference Design 將下載到 %Home%\ReferenceDesigns\Arrow\ 路徑中。

參考設計中，將包含主要功能零件功能設計圖與使用的零件資訊。



Graser®

本版Technic Note版權為 映陽科技股份有限公司 所有，未經允許不得任意轉用。

© 2017 Graser Technology Co.,Ltd.